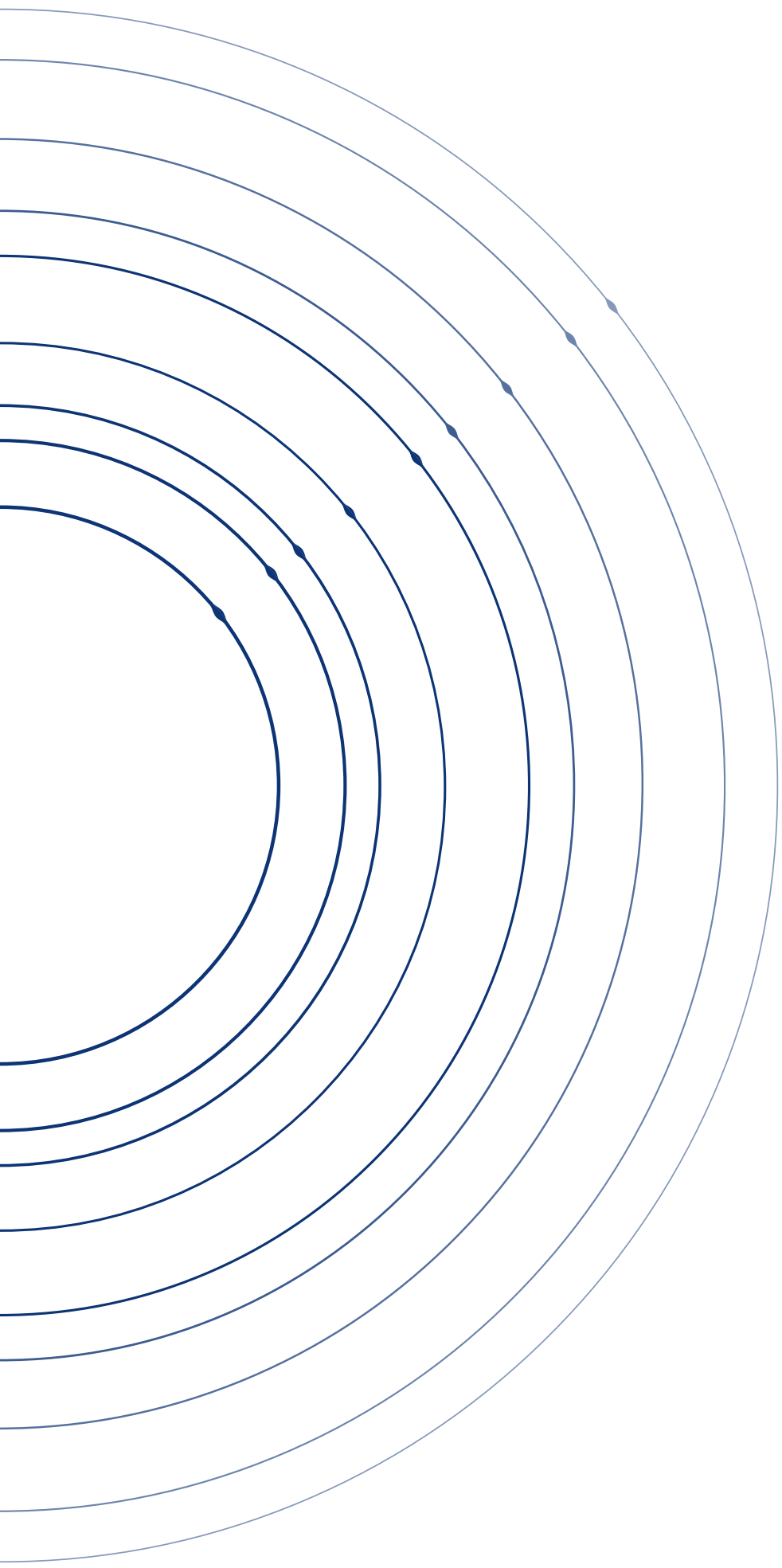


2026 Edition

# SHAREHOLDER'S GUIDE





S

T

MESSAGE FROM  
THE CHAIRMAN AND THE CHIEF  
EXECUTIVE OFFICER P.4

Z

WHAT IT MEANS TO BE  
AN OPmobility SHAREHOLDER P.6

E

OPmobility IN A NUTSHELL P.7

L

**2025 key figures**  
**OPmobility today**  
**Strategic priorities**  
**Carbone neutrality**

O

OPmobility SHARE P.12

O

**Share price evolution**  
**Capital structure**  
**Dividend policy**  
**Recent publications**

E

OPmobility & YOU P.14

L

**Methods of owership**  
**Taxation of dividends**  
**Generale Meetings**  
**Agenda**

M

A

GLOSSARY P.18

T

# MESSAGE FROM THE CHAIRMAN AND THE CHIEF EXECUTIVE OFFICER

**I**ndependence, majority control, and long-term management form the basis of OPmobility's identity.

Dear shareholders,

2025 was a good year for OPmobility, in a turbulent geopolitical climate and a volatile automotive market.

Once again, our fundamentals of regional globalization, selective investments, and technological innovation enabled us to improve our results, supported by a Group which will celebrate its 80<sup>th</sup> anniversary in 2026.

Our extensive international footprint, the constant development of our customer portfolio, the addition of new technologies to improve mobility, and the "OPway" of managing our growth are the cornerstones of a Group worth more than €11 billion.

Independence, majority control, and long-term management form the basis of OPmobility's identity.

Félicie Burelle is the third generation of the family to take the helm of the company and is now its Chief Executive Officer, after Pierre Burelle, Jean Burelle, and myself, with the unanimous support of the Board of Directors.

At a time when the spectacular growth in automotive production in China and technological innovation in America will bring about profound changes in mobility in the coming years, OPmobility is looking ahead with a sense of confidence and anticipation.



**LAURENT BURELLE**  
CHAIRMAN

## **OPmobility achieved strong annual results, illustrating our ability to combine long-term strategy with short-term agility to create value over time.**

Dear shareholders,

I enthusiastically continue the mission entrusted to me by the Board of Directors to carry forward the Group's strategy in continuity. Improving our performance remains one of my priorities to enable OPmobility to continue its remarkable development by investing and innovating. Furthermore, the Group will maintain its independence and its high operational responsiveness.

OPmobility achieved strong annual results, illustrating our ability to combine long-term strategy with short-term agility to create value over time. I would like to thank our teams who have once again demonstrated an exceptional commitment. In this respect, while strengthening our competitiveness and balance sheet by accelerating our cost saving and investment control measures, we are preparing for the future. We confirm our ambitions, particularly in the United States and Asia.

This 2026 edition of the Shareholder's Guide provides you a detailed presentation of OPmobility, as well as practical information on the stock price, the share capital and the management of your shares. As a shareholder or future shareholder, we hope that you will find in this guide, which has been prepared for you, all the useful information that will facilitate your procedures

On behalf of all OPmobility employees, I would like to thank you for the trust you place in the Group.



**FÉLICIE BURELLE**  
CHIEF EXECUTIVE OFFICER

# WHAT IT MEANS TO BE SHAREHOLDER OF



**ACTIVELY PARTICIPATING**  
in the mobility business alongside a bold and confident Group

**SHARING**  
in the success of a world leader and contributing to the writing of its long-term story

**INVESTING**  
in a sustainable, responsible, and profitable growth share

**BEING PART**  
of a passionate, entrepreneurial group guided by excellence: quality, expertise and constant innovation

# OPmobility IN A NUTSHELL

## 2025 KEY FIGURES



**€11.5bn**  
Economic revenue\*  
+1.7%\*\* vs. 2024



**€490m**  
Operating margin  
+11.4% vs. 2024

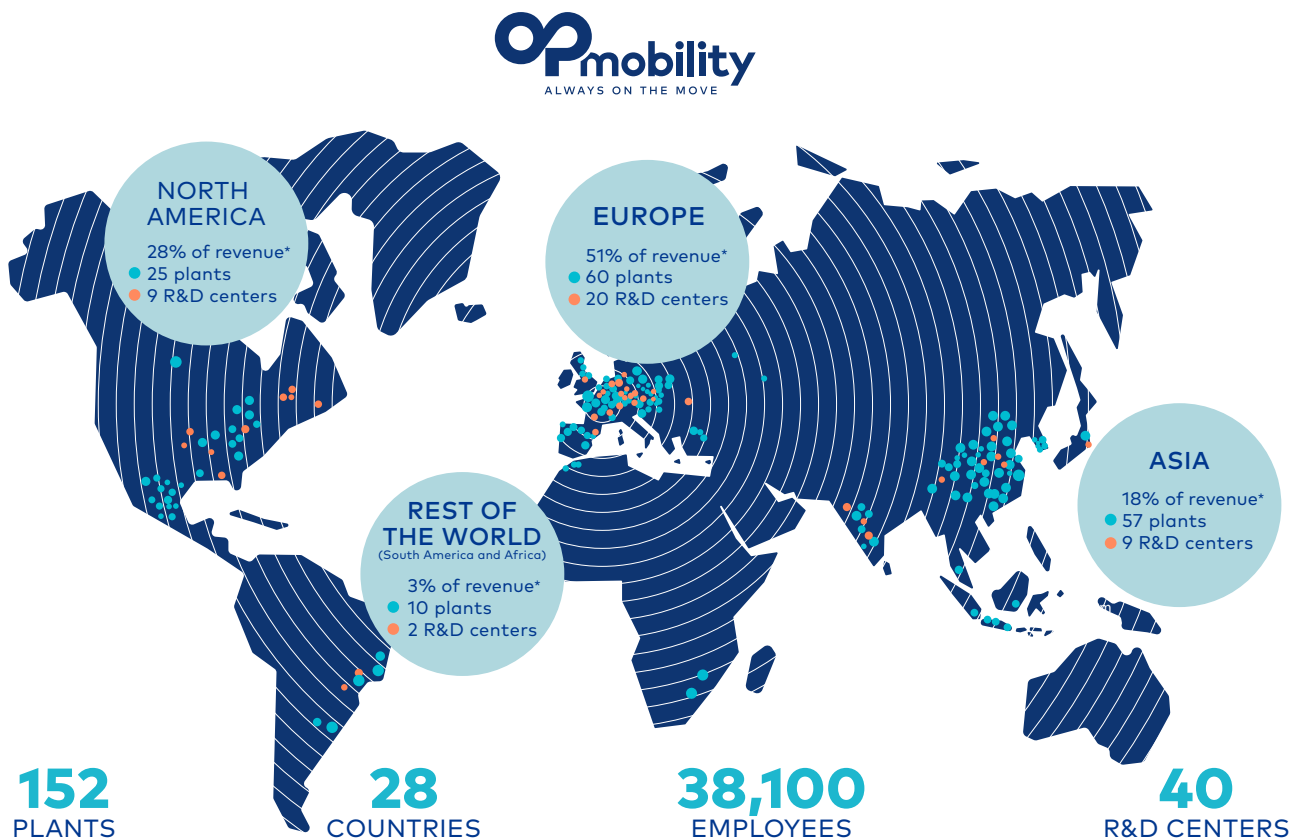


**€297m**  
Cash-flow libre  
+20.7% vs. 2024

**€185m**  
Net profit, Group share  
+8.9% vs. 2024

**4.4%**  
Capital expenditure  
in 2025 revenue

**1.4x**  
Leverage (Net debt/EBITDA)  
vs. 1.7x in 2024



\* Economic revenue

\*\* Changes are in Like-for-Like





# OPmobility TODAY

## A GLOBAL LEADER IN TECHNOLOGICAL SOLUTIONS FOR SUSTAINABLE AND ACCESSIBLE MOBILITY

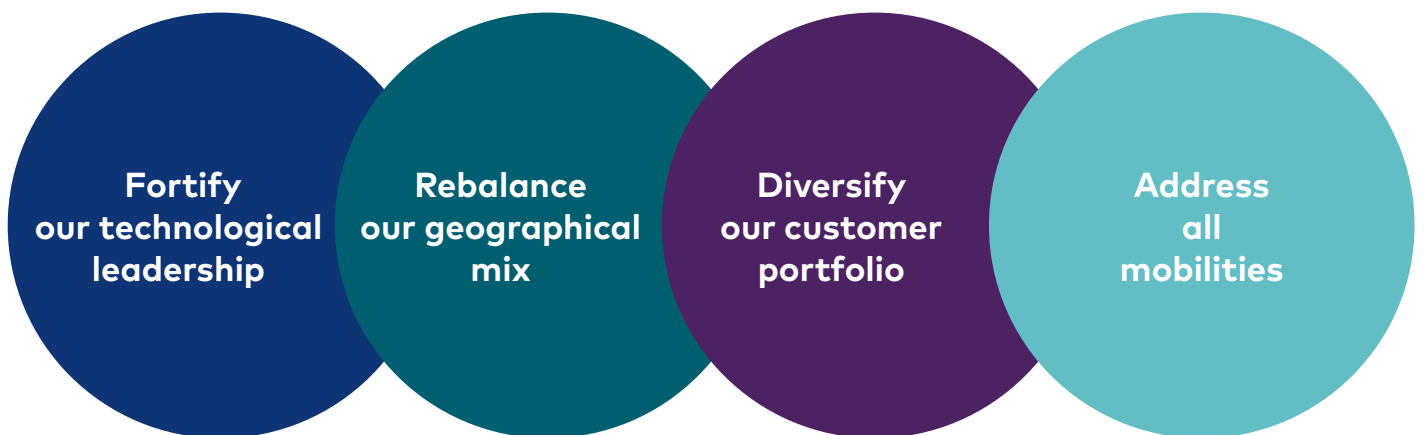
As the leader in a market undergoing rapid change, OPmobility is innovating to bring about a safer, more sustainable, and more accessible mobility. Guided by its purpose of "Driving a new generation of mobility", the Group challenges the status quo by exploring new opportunities: hydrogen, modular systems, connected safety, and more.

As a family business for four generations, OPmobility upholds a sustainable vision of mobility which has led to its profound strategic transformation. The Group has begun diversifying its activities, expanding its customer portfolio, rebalancing its geographical presence, and committing to all forms of mobility. This strategy is behind the Group's rapid development, driven by organic growth and strong partnerships and joint ventures.

Over the last few years, OPmobility has strengthened the development of its activities all over the world to meet local needs and has expanded its customer portfolio, particularly with new players in electric and heavy mobility. OPmobility is able to meet the needs of all forms of mobility, confirming its position as a key technology partner for the mobility of tomorrow.

## STRATEGIC PRIORITIES

addressing the challenges of a fast-evolving market



# A wide-ranging and innovative technology portfolio

As a leading technology partner for all forms of mobility around the world, OPmobility has structured its technology offerings into two key segments: exterior solutions (Exterior & Lighting, Modules) and powertrain solutions (C-Power, H<sub>2</sub>-Power). In addition, OP'nSoft provides software development activities for the Group's mobility products and services.

## EXTERIOR SOLUTIONS

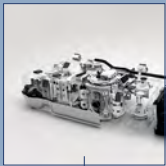


**EXTERIOR & LIGHTING**  
Exterior systems and lighting systems



**MODULES**  
Module design, development, and assembly

## POWERTRAIN SOLUTIONS



**C-POWER**  
Energy storage, emissions control, and electrification systems



**H<sub>2</sub>-POWER**  
Hydrogen solutions

## DIGITAL SOLUTIONS



**OP'nSoft**  
Cross-functional entity which brings together software development activities for the Group's mobility products and services

# A diverse customer portfolio, reflecting the mobility of today and tomorrow

Over the last few years, OPmobility has strengthened the development of its activities all over the world to meet local needs and has expanded its customer portfolio, particularly with new players in electric and heavy mobility. OPmobility is able to meet the needs of all forms of mobility, confirming its position as a key technology partner for the mobility of tomorrow.

### LONG-STANDING CAR MANUFACTURERS

Volkswagen Group, Stellantis, Mercedes-Benz Group, General Motors Group, BMW Group, Ford, etc.

### MORE RECENT PLAYERS IN ELECTRIC MOBILITY

Rivian, Chery, Geely, BYD, NIO, etc.

### LEADERS IN HEAVY AND COLLECTIVE MOBILITY

CRRC (China Railway Rolling Stock Corp.), Stadler, Alstom, HESS AG, Siemens, Hyliko, etc.



Front & rear bumpers

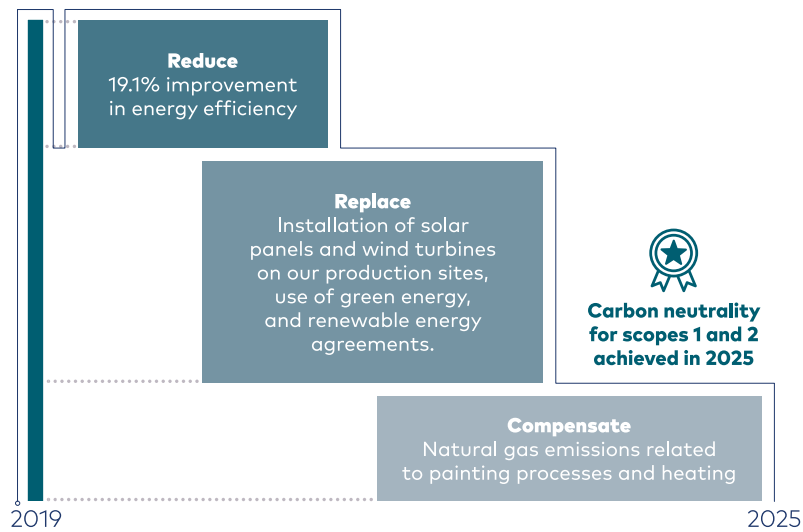
# Our commitment to **CARBON NEUTRALITY**

OPmobility has long been committed to sustainable mobility and carbon footprint reduction.

Its carbon-neutrality strategy mobilizes the entire Group and its partners. In line with the commitment made in 2021, OPmobility achieved its carbon neutrality target for scopes 1 and 2 for the entire Group in 2025, including the lighting acquisitions made in 2022.

## Scopes 1 and 2 Implementation of the 2019-2025 roadmap to reduce CO<sub>2</sub> emissions — In ktCO<sub>2</sub>e

**522**



In 2025, OPmobility reached carbon neutrality for its operations, driven by an 83% reduction in emissions and the offsetting of residual emissions. This result is based on reduced energy consumption, the rollout of solar panels and wind turbines, and renewable electricity supply contracts.

The Group is pursuing its trajectory towards a 30% reduction in upstream and downstream scope 3 CO<sub>2</sub> emissions by 2030, compared with 2019, while mobilizing its entire value chain to become Net-Zero by 2050.

## RECOGNIZED COMMITMENTS



○ **A** For the third time in a row for the Climate questionnaire



○ **80/100** Among the top 5% of assessed companies



○ **AA** Among the industry's top 10%



○ **B-** Among industry leaders

# OPmobility SHARE

OPmobility shares are listed in Compartment A of Euronext Paris and are included within the SBF 120, CAC MID 60 kstock exchange indices and are eligible to SRD (ISIN code FR0000 124570).

## SHARE PRICE EVOLUTION



## CAPITAL STRUCTURE

144,022,153 shares as of December 31, 2025

**1.8%**

Employee shareholders  
& held by Company

**37.6%**

Public



**60.6%**

Burelle SA

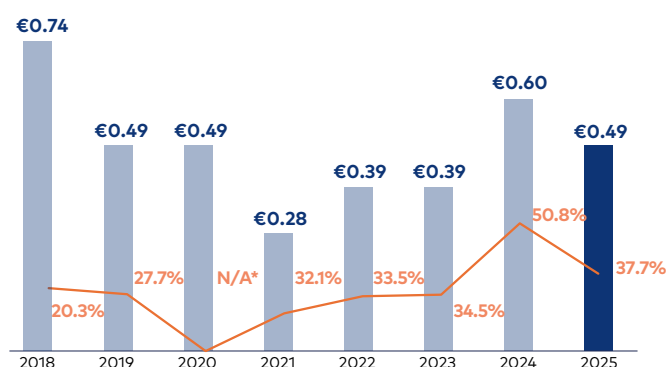


# DIVIDEND POLICY

We encourage long-term commitment. That is why we encourage long-term shareholding, by establishing transparent relations with our investors and by distributing a dividend regularly. The dividend is distributed in cash at the close of the Annual Shareholders' Meeting, which will be held on April 23, 2026 at the Pavillon Dauphine, Paris 16<sup>th</sup>. The Board of Directors of OPmobility SE has decided to propose the payment of a dividend corresponding to a payout ratio of 37.7% or 0.49 euro per share, as for 2025 results, subject to approval by the General Meeting of Shareholders.

## SHAREHOLDERS' REMUNERATION

Dividend per share (in euros)  
and payout ratio (in %)



# RECENT PUBLICATIONS

## INSTITUTIONAL PUBLICATIONS

- Universal Registration Document
- Integrated Report

## SHAREHOLDERS PUBLICATIONS

- Letters to shareholders
- Shareholder's guide

## FINANCIAL PUBLICATIONS

- Press releases
- Presentations of results



Find all information on our website:  
[www.opmobility.com](http://www.opmobility.com)



Find all of our financial news on our **OPmobility IR** application.

We invite you to scan the QR Code or download the app via App Store for iPhone and iPad or Google play for Android.



\* Net result Group share negative in the context of the Covid-19 crisis.

# OPmobility & YOU

## METHODS OF OWNERSHIP

When you buy an OPmobility share, you become the owner of a fraction of its capital and invest in its development.

The status enables you: to be informed of the company's activities, to vote at General Meetings and to receive the dividends that the General Meeting votes to distribute.



### BEARER SHARES

An account is opened with your financial intermediary (bank, stockbroker). You are not known to OPmobility.



### ADMINISTERED REGISTERED SHARES

Your shares are registered with OPmobility but are still managed by your financial intermediary, who remains your point of contact for all transactions. If you own registered shares in a PEA (share savings plan), an administered registered account is recommended.



### PURE REGISTERED SHARES

Your shares are kept by OPmobility, which delegates their management to Uptevia.

## THE ADVANTAGES OF REGISTERED SHARES

- Exemption from custody and management fees only for pure registered shares
- Automatic updates from the OPmobility Group
- Personalized contact on the management of shares with Uptevia
- Personalized contact with the Group's Shareholder Services

## GOOD TO KNOW

For all information relating to the management of registered shares, please contact:

**Uptevia**

**Service aux Émetteurs**

La Défense – Cœur Défense Tour A  
90-110 Esplanade du Général de Gaulle  
92 400 Courbevoie – France

Tel.: +33 (0) 800 00 75 35  
from France (free call)

and +33 (0)1 49 37 82 36  
from abroad (call rate to France)

# TAXATION OF DIVIDENDS

- All paid **dividends** are subject to a single flat-rate tax (*Prélèvement Forfaitaire Unique* - PFU) increased to 31.4% withheld by the paying institution at the time of payment. However, it is still possible to opt for taxation according to the progressive income tax scale.

## Taxation arrangements are as follows:

- in 2026, when the dividend is paid, the paying institution withholds the following amounts:
  - the PFU single flat-rate tax of 12.8% as income tax,
  - social security contributions (PS) increased to 18.6% following the adoption of the 2026 Social Security Financing Act.
- in 2027, when filing tax returns, natural persons will be able to choose between:
  - opting for single flat-rate PFU taxation on paid dividends at a rate of 12.8% and imputing the mandatory non-discharging flat-rate withholding tax (PFO) of 12.8% made by the paying institution in 2026, or
  - opting to be taxed as income tax according to the progressive tax scale. In the latter case, the tax-payer has the benefit of an abatement of 40% and a deduction of 6.8% on the dividend as deductible CSG paid in 2026. The mandatory non-discharging flat-rate withholding tax (PFO) made by the paying institution in 2026 is imputed on income tax owed for the year and any surplus is refundable.

Please note that tax-payers whose reference tax income for the year preceding payment is lower than €50,000/75,000, depending on their family situation, can always request exemption from the withholding tax of 12.8% under their income tax. Any such request should be made to the paying institution before November 30<sup>th</sup> of the year preceding the year of payment.



# GENERAL MEETINGS

Ordinary General Meetings (OGMs) are held once a year within six months of the end of the company's financial year. Their purpose, in particular, is **to inform** the shareholders about the Group's business and results, **to approve** the accounts, to decide on the allocation of income, and **to appoint** members of Company's Board of Directors and the Statutory Auditors **or to renew** their terms of office, to decide on the remuneration policies and on the remunerations themselves of the corporate officers. The resolutions of OGMs are adopted by a simple majority of the shareholders present or represented.

Extraordinary General Meetings (EGMs) are convened when the Company **submits amendments of the Articles of Association or capital transactions** (capital increases or reductions mergers, etc.) for the approval of the shareholders. In most cases, their resolutions must be adopted by a majority of two thirds of the capital present or represented. Combined General Meetings include both types of meeting in one General Meeting. They are then divided into two parts, an "Ordinary" part for which the majority is that required for OGMs, and an "Extraordinary" part for which the majority is that required for EGMs.

OPmobility provides **VOTACCESS** to facilitate your procedures.



Next General Meeting:  
**April 23<sup>rd</sup>, 2026**

# AGENDA



## AGENDA IN 2026

- **APRIL 21, 2026:**  
First quarter revenue
- **APRIL 23, 2026:**  
General Meeting
- **JULY 22, 2026:**  
Half-year results
- **OCTOBER 21, 2026:**  
Third quarter revenue

## INDIVIDUAL SHAREHOLDERS

**As of December 31, 2025, OPmobility had over 25,000 individual shareholders.**

In order to strengthen dialogue with shareholders and promote long-term commitment of investors, the members of the Board of Directors and the entire executive management team pay particular attention to relationships with individual shareholders. OPmobility maintains regular communication with its individual shareholders, notably through the regular organization of site visits. On June 25, 2025, **the Investor Relations Department organized a visit to the α-Alphatech Research and Development center near Compiègne**, France. Nearly twenty individual shareholders had the opportunity to discover the products and activities of the C-Power and H<sub>2</sub>-Power business groups.

The Group also took part, on June 30, 2025, in **a meeting held in Paris** and organized by Place des investisseurs, **bringing together nearly one hundred individual shareholders**. On this occasion, the Investor Relations Department presented OPmobility's activities and strategy, as well as its ESG commitments, and answered participants' questions.

In addition, in 2025, **OPmobility's Investor Relations team organized two webinars dedicated to individual shareholders**, presenting the Group's 2024 annual results and 2025 half-year results, followed by Q&A sessions with participants. For the first time this year, these two results-focused sessions were complemented by thematic highlights, first on the Consumer Electronics Show (CES 2025) in Las Vegas and then on the Group's activities in India.

Each year, the Investor Relations Department makes available to individual shareholders two **letters to shareholders** as well as a new edition of the **shareholder's Guide**, accessible in the "Individual Shareholders" section of the "Finance" area of the Group's website.

Find all the information  
on our website  
[www.opmobility.com](http://www.opmobility.com)

# GLOSSARY

## **D** AS OF **DIVIDEND**

Share of the net income of a company distributed to shareholders. Its amount is voted on by shareholders at the General Meeting of Shareholders, after approval of the annual financial statements and on the recommendation of the Board of Directors

## **N** AS OF **NET DEBT**

Net debt includes all long-term borrowings, short-term loans and bank overdrafts less loans, marketable debt instruments and other non-current financial assets, cash and cash equivalents.

## **E** AS OF **ECONOMIC REVENUE**

Corresponds to consolidated revenue plus revenue from investments by controlled subsidiaries in joint ventures and associates consolidated at their percentage holding: BPO (50%) and YFPO (50%) for Exterior & Lighting, EKPO (40%) for Powertrain and SHB (50%) for Modules.

## **O** AS OF **OPERATING MARGIN**

Operating margin includes the Group's share of income from companies consolidated using the equity method and amortization of intangible assets acquired, before other operating income and expense.

## **F** AS OF **FREE CASH FLOW**

Free cash flow corresponds to the operating cash flow, less tangible and intangible investments net of disposals, taxes and net interest paid +/- variation of the working capital requirements (cash surplus from operations).

## **P** AS OF **PUBLIC** (FREE FLOAT)

The portion of a company's share capital that is publicly available and freely tradable on the stock market, A higher free float generally results in increased share liquidity.

## **H** AS OF **HELD BY COMPANY**

Shares held by Company represent the portion of the share capital held by the Company which issued them. They do not have voting rights and do not receive dividends.





1, allée Pierre Burelle  
92593 Levallois Cedex - France  
Tel.: +33 (0)1 40 87 64 00  
Fax: +33 (0)1 47 39 78 98

[www.opmobility.com](http://www.opmobility.com)

OPmobility SE  
with issued capital of €8,641,329.18  
Headquarters: 19, boulevard Jules-Carteret  
69007 Lyon - France  
955 512 611 RCS Lyon - APE 6420 Z

**Individual Shareholders Service**

**0 800 777 889** Service & appel  
gratuits